



# The BISHOP'S PALACE & GARDENS

## SPRING EVENTS

## 2009

## DINING AT THE BISHOP'S PALACE

Sunday 22nd March – from 2 - 3pm  
MOTHERING SUNDAY LUNCH



Treat your Mum to a delicious lunch in the Undercroft Restaurant followed by a stroll around the gardens of The Bishop's Palace.

*Mum's enter free with one other full paying adult.*

Friday 24th April

Saturday 23rd May

Saturday 13th June (all from 7pm)

### A LA CARTE EVENINGS

Come to experience and enjoy fine dining in the splendid surroundings of The Bishop's Palace and Gardens.

*These evenings are very popular so please make sure you book early.*



### FREE GUIDED TOURS OF THE BISHOP'S PALACE AND GARDENS

Included in the cost of entrance, at weekends and holidays.

*Subject to staff availability.*

# FAMILY ACTIVITIES

**Sunday 29th March – from 11am - 4pm**

## RARE PLANTS FAIR

For further information please phone 0845 4681368 or visit [www.rareplantfair.co.uk](http://www.rareplantfair.co.uk)



*All activities are included in the price of admission unless otherwise stated.*

**CHILDREN MUST BE ACCOMPANIED BY AN ADULT.**

*For further enquiries or to make a booking please ring*

*Helen Garrett on*

**01749 678691**

*ext. 200 or email*

**[helen.garrett@](mailto:helen.garrett@bishopsplace.org.uk)**

**[bishopsplace.org.uk](http://bishopsplace.org.uk)**

**Wednesday 8th April & Wednesday 15th April – from 11am - 4pm**

## EASTER EGG PAINTING

Come and find out why people in medieval times used to paint their eggs at Easter time and have a go yourself.

**Saturday 18th April – from 11am - 4pm**

## MEDIEVAL TILE MAKING

Try your hand at making a decorative, medieval floor tile, just like the ones that might have decorated the floors in the Palace. You can see fine examples from the area and have a go at making one yourself based on authentic patterns, using clay. There will be opportunities to purchase the tiles you make. A workshop run by Caroline Hayles.



**Saturday 2nd May & Sunday 3rd May – from 11am - 4pm**

## HUNGERFORD HOUSEHOLD

The Hungerford Household are an early Tudor living history group. Come and see how people dressed, what they did as hobbies and join in with some Tudor music and dancing. The fun will be in the gardens, or indoors if the weather is poor.



**Saturday 23rd May – from 11am - 4pm**

## BIRDS OF PREY AT THE PALACE

Following last years success, Birds of Prey are back at The Palace. Come and learn more about the birds and their habits from the expert who cares for them. There will be flying demonstrations at 12pm and 3pm.



**Saturday 23rd to Sunday 31st May – Daily from 10.30am - 5pm**

## TRAILS AND TREASURE

As you go around The Bishop's Palace and Gardens, choose one of our exciting trails to help you along. You never know, you might even find some treasure!



# EXHIBITIONS

**Wednesday 1st April - Saturday 31st October**

**IAN MARLOW,  
ART AND SOUL**



**Sculpture**

A major one-man show in the beautifully landscaped grounds of The Bishop's Palace. The exhibition will feature the latest stainless steel sculptures specially created for this wonderful setting.

[www.marlowsculpture.co.uk](http://www.marlowsculpture.co.uk)

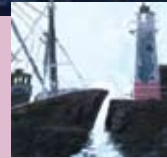


**Wednesday 1st April - Friday 8th May**

**JEREMY LE GRICE  
'HOMAGE TO THE HINTON CEDARS'**

**Painting**

A magnificent grove of two dozen cedars has flourished for three hundred years in the park of Hinton House, Hinton St George, near Crewkerne. This exhibition celebrates the grandeur of these mature trees. Jeremy Le Grice, who is renowned primarily for his portrayals of the sea, coast and vessels of the West Country, shows here an involvement with the wider sphere of landscape.



**Sunday 10th May - Friday 22nd May**

**JACK FIELDHOUSE & JULIE BRAHAM  
DRAWING ON EXPERIENCE**

**Drawing & Painting**

A return visit by two artists who held a successful exhibition in 2007.



**Sunday 24th May – Friday 19th June**

**DAPHNE JOWIT  
EXPLORING THE WOODS (One woman's journey)**

An exhibition of inspired woodwork



**Monday 22nd June - Friday 10th July**

**JEAN CECIL  
PAINTING IN PROVENCE**

Mixed Media by a member of Bath Society of Artists.

Jean Cecil lives in Bath and regularly paints in Provence.



# THEATRE

Friday 26th June – 6.30pm

## ROMEO AND JULIET

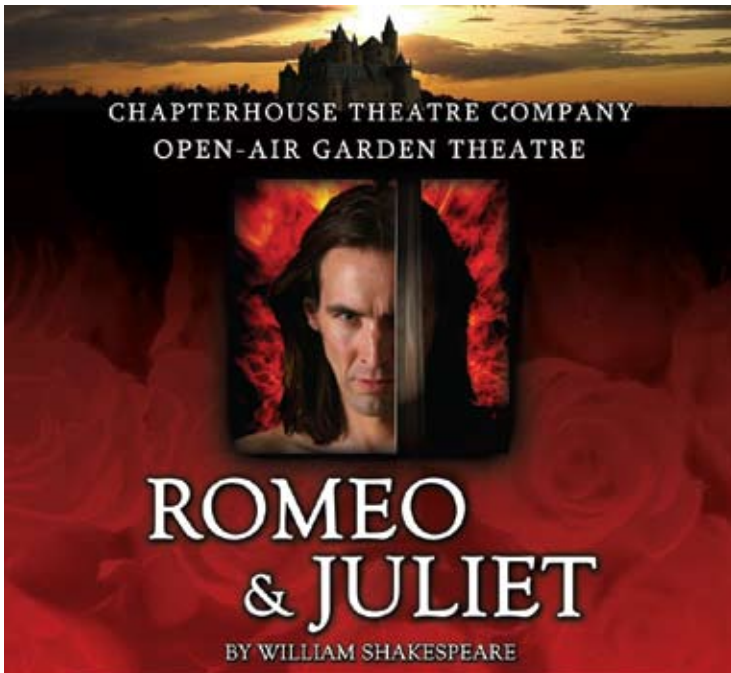
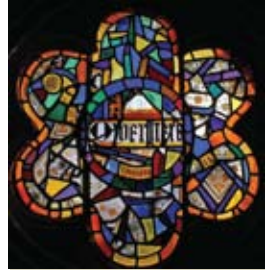
Shakespeare's romantic tale of star-crossed lovers, the greatest love story ever told unfolds against the stunning backdrop of The Bishop's Palace and Gardens. A large cast, magnificent costumes and an enchanting musical score promise to make this one of the most memorable evenings of the summer. Picnic with family and friends in magical surroundings and enjoy an evening of love, music and beauty. Bar and BBQ will be available.

*Adults £12, children/students £8, family ticket £35.*

*There is a 10% discount for parties of 10 or more.*



*All theatre and concert events are priced individually. Please refer to listings for correct prices.*



*All activities are included in the price of admission unless otherwise stated. **CHILDREN MUST BE ACCOMPANIED BY AN ADULT.** For further enquiries or to make a booking please contact Helen Garrett on **01749 678691 ext. 200** or e-mail [helen.garrett@bishopsalace.org.uk](mailto:helen.garrett@bishopsalace.org.uk) For further information about opening times, events, admission prices and season tickets, please visit our website [www.bishopsalace.org.uk](http://www.bishopsalace.org.uk)*

